



imes-icore[®]
Dental & Medical Solutions



CORiTEC[®] **AM** series

YOUR BUSINESS MODEL FOR WORKFLOW-BASED METAL PRINTING

CORiTEC® AM series

THE IDEAL COMBINATION FOR PRODUCTION CENTERS AND DENTAL LABORATORIES

The CORiTEC AM100 metal 3D printer is the fast and affordable entry into additive dental production. The production of up to 250 tooth units per processing cycle sets new standards! By creating tooth prostheses using the laser melting process, highly complex frameworks such as superstructures, model casting, primary as well as secondary parts, crowns and bridges are possible. The innovative cartridge system also enables low handling effort, since the powder is already in the cartridge containers. In combination with the CORiTEC AMpure, used material can be recycled and reused. This coordinated technology ensures low manufacturing costs and thus rapid amortization!

The CORiTEC AMpure unpacking station is a game changer! The door of the chamber has two integrated gloves. This makes it possible to unpack the components without any powder contact. The collected powder is prepared fully automated in the integrated ultrasonic sieving station and can be processed again in the CORiTEC AM100 - clean and sustainable, simple and up to date!

Analogous to the CORiTEC AMpure, the CORiTEC AMpure lite modular screening unit offers direct powder recycling. The module can be directly attached to the CORiTEC AM100 and thus represents a cost-effective and space-saving alternative.



CORiTEC®
AMpure lite



Sieving unit for
powder recycling

CORiTEC®
AM100



3D Metal
Printer

CORiTEC®
AMpure

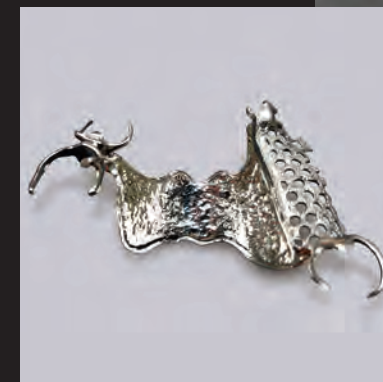


Unpacking station included
ultrasonic sieve unit for simple
and clean powder preparation

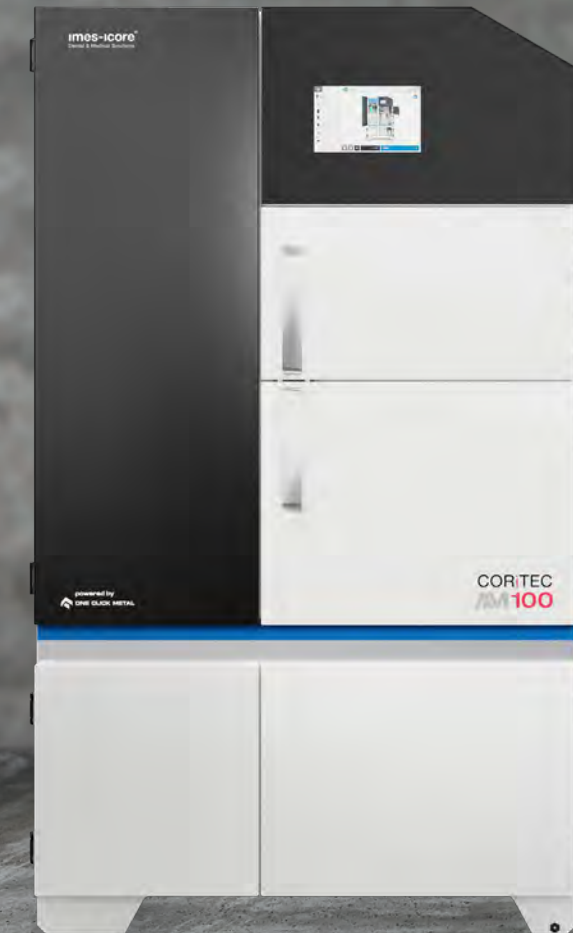
CORiTEC® AM100

COMPLEX DENTAL CONSTRUCTIONS SIMPLY PRODUCED

The metal 3D printer operates according to the Laser-Powder-Bed-Fusion process. The perfectly matched settings between the 200 W fiber laser, the optics and the focus in combination with optimal layer thickness create an ideal melt pool size and thus lead to excellent printing results and surface quality. This enables the production of the most complex geometries on a surface area of 5.9 x 5.9 inch (150 x 150 mm) and a maximum height of 5.9 inch (150 mm). This modern technology combines speed and sustainability with the result of cost-effective production of dental constructions!



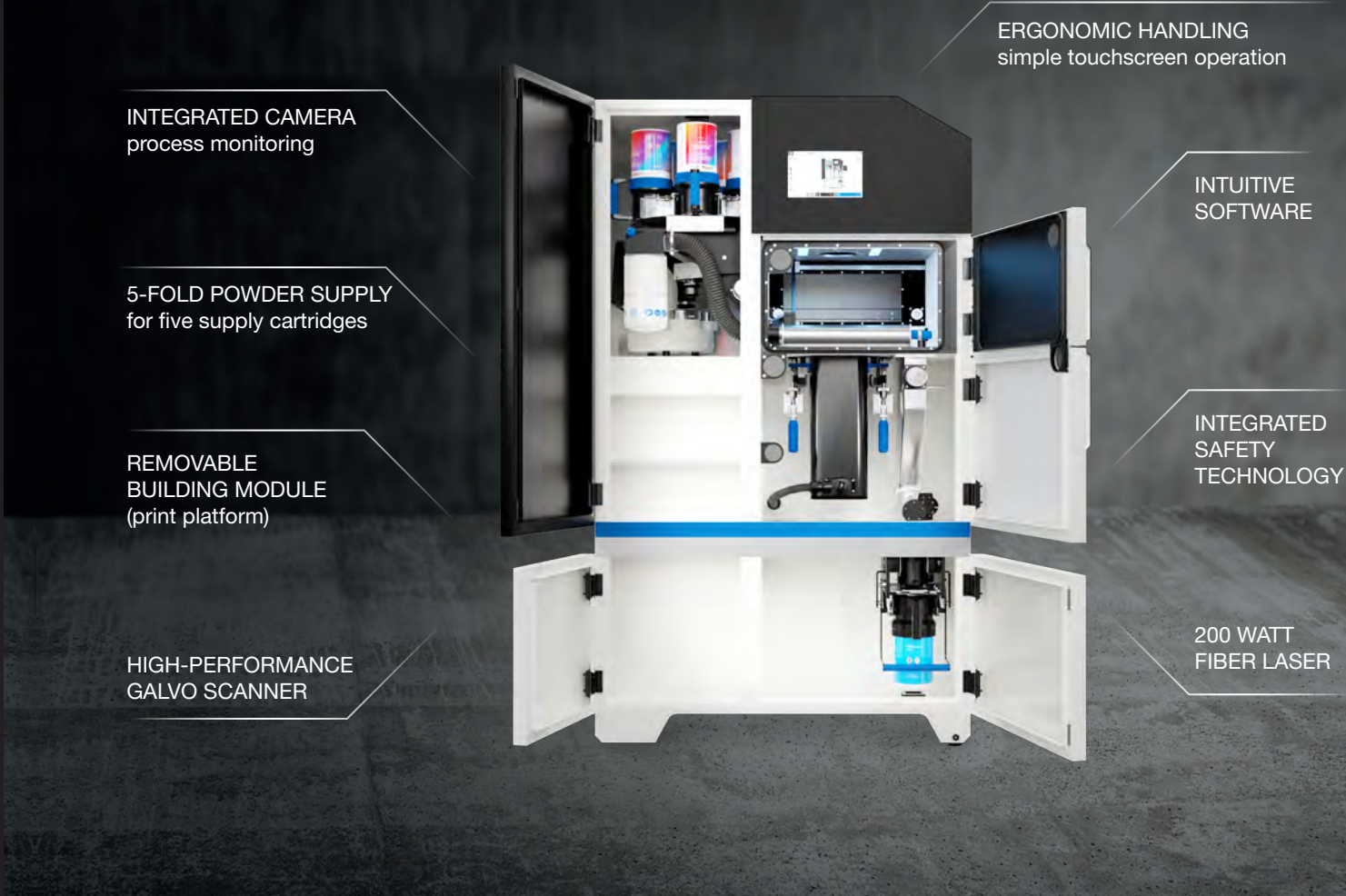
approx. 43 inch
110 cm



CORiTEC® AM100

HIGHLIGHTS

- Print time per tooth unit < 3 minutes
- Up to 250 dental units per processing cycle
- Up to 500 dental units per day possible
- The most modern production technology by 200 watt fiber laser and high-performance galvo scanner
- Simple touch screen operation
- Optimal process monitoring by integrated camera
- Online remote monitoring and maintenance
- Integrated 5-fold powder supply for five supply cartridges
- Loading the machine with prepared/new powder during the ongoing production process
- Removable building module (printing platform)
- Easy machine operation through intuitive step-by-step software

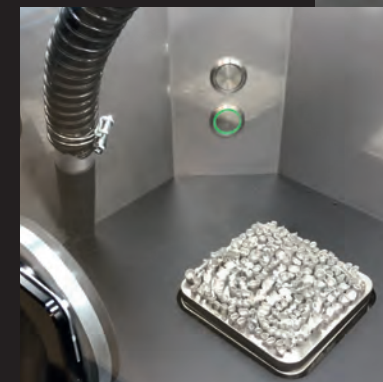
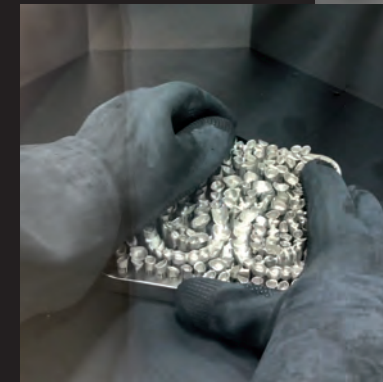
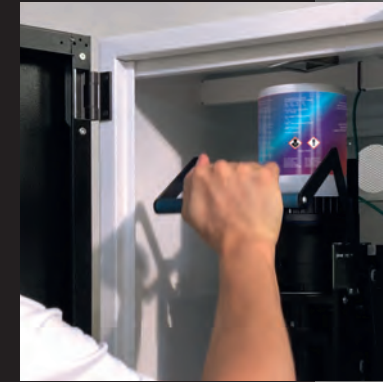


| | | | | | | | |
|------|---|-----------------------------|--------------------------------|------------------|----------------------|-----------------------|---------------------|
| Ti | Square production (construction) platform | Hybrid technology one-sided | Hybrid technology double-sided | Crown, Bridge | Inlay, Onlay, Veneer | Telescopic technology | Model casting |
| CoCr | | | | Hybrid machining | | Abutment | Implant prosthetics |

CORiTEC® AMpure

THE PERFECT SUPPLEMENT! SUSTAINABILITY AND CLEANLINESS IN ONE SYSTEM

The 2in1 unpacking station – unpacking and sieving – with integrated connection for vacuum cleaner offers the perfect synergy between the Laser-Powder-Bed-Fusion printing process and the subsequent cleaning of the components without powder contact. During cleaning, the excess powder is collected in an overflow cartridge and then processed in the ultrasonic sieve station. Thus, the prepared powder can be reused for the next printing process! The innovative cartridge system offers safe and easy handling operation, and therefore enables massive material savings.



approx. 43 inch
110 cm



CORiTEC® MMpure

HIGHLIGHTS

- Glove intervention for unpacking the components with minimum direct powder contact
- Powder preparation by intelligent ultrasonic sieving station
- Massive material savings by recycling the sieved powder
- Innovative powder management including compatible overflow and supply cartridges
- Easy disposal of the overflow powder through a separated collection container
- Connection for the external suction system
- Status signaling by integrated LED band

SUSTAINABILITY THROUGH
POWDER PREPARATION

NO DIRECT POWDER CONTACT
due to separate powder handling

ULTRASONIC SIEVE STATION FOR
POWDER PREPARATION

VACUUM CLEANER
CONNECTION

COST SAVINGS DUE TO
MATERIAL SAVING

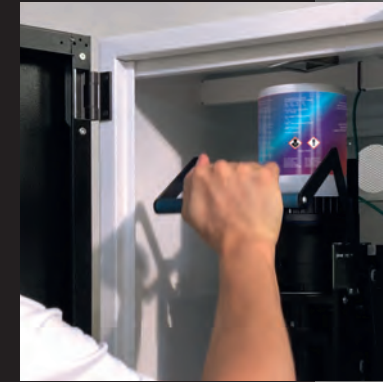
INNOVATIVE
CARTRIDGE SYSTEM



CORiTEC® AM *pure lite*

THE MODULAR SCREENING UNIT AS SPACE-SAVING ADDITION

The CORiTEC AM *pure lite* is the sieving station of the CORiTEC AM series and is compatible with the CORiTEC AM100. The system sieves the powder and thus provides recycled powder for reuse. The cartridge system of the CORiTEC AM series ensures simple and safe powder handling, so that contact with the powder is avoided. The cartridge system of the CORiTEC AM series ensures simple and safe powder handling, so that contact with the powder is reduced to a minimum for the user.



approx. 18 inch
46 cm



CORiTEC® **AM** *pure lite*

HIGHLIGHTS

- Powder preparation by intelligent ultrasonic sieving station
- Massive material savings by recycling the sieved powder
- Innovative powder management including compatible overflow and supply cartridges
- Easy disposal of the overflow powder through a separated collection container

SUSTAINABILITY THROUGH
POWDER PREPARATION

ULTRASONIC SIEVE
STATION FOR POWDER
PREPARATION

COST SAVINGS
DUE TO MATERIAL
SAVING

INNOVATIVE
CARTRIDGE SYSTEM



CORiTEC® AM STARTERKIT

PERFECTLY EQUIPPED - GET STARTED RIGHT AWAY!

Professional start! Thanks to the comprehensive starter kit, your 3D- print production is ready for immediate use in just a few steps. It contains all the necessary components and offers the option of using both machines separately. The expansion option, which includes an additional add-on module and two additional empty supply cartridges, enables the CORiTEC AM series to operate non-stop! While the first job in the CORiTEC AM^{pure} is unpacked and cleaned, a new job with a second build module can be started directly in CORiTEC AM¹⁰⁰.



- Training for the CORiTEC manufacturing workflow
- Tried and tested parameters designed for your manufacturing
- Remote access to the HMI
- Personal protective equipment as well as required tools
- Set of 5 supply interfaces
- Set of 2 overflow interfaces
- Set of 2 overflow containers
- 5-pack cartridge set with CoCr or Ti powder
- 10-pack of coater medium
- 2 x 3-pack substrate plate
- Bayonet lock
- Electric lifting device incl. construction module fork*

*contained in the CoCr starter kit with lifter

Powder material

i-PROFUSE
i-PROMELT

PERFECTLY MATCHED TO THE CORiTEC AM SERIES

In addition to software and hardware, the material in particular is of great importance for production success. The CoCr and Ti powders i-ProMelt and i-ProFuse are certified and quality-tested powders for the CORiTEC AM¹⁰⁰ and its parameters for building up dental applications.

Supplied ready to start in the proven form – the powder container also serves as a supply container in the machine – the material can be fed directly into the process, without cumbersome filling of cylinders or building chambers of the machines. The powder has excellent process and flow properties and, with a particle size distribution of 10 – 30 µm for optimum surface quality.

Highly complex frameworks can be built with i-ProMelt and i-ProFuse! Thus, both powders forms the perfect basis for a variety of veneering ceramics and composite build-ups, such as model casting.



HIGHLIGHTS

- A particle size distribution of 10 – 30 µm
- Excellent processing properties
- Due to the type 5 alloy according to DIN EN ISO22674 perfectly suitable for highly complex frameworks, such as superstructures, model castings, primary and secondary parts as well as crowns and bridges
- Perfect base for a wide range of veneering ceramics due to a CTE value of 14.5 (20 – 500 °C)
- Optimum handling of the powder material due to suitable containers for the CORiTEC AM cartridge system (VPE 5 kg)

i-PRODENS

Powder management

SUSTAINABLE PRODUCTION IN JUST A FEW STEPS

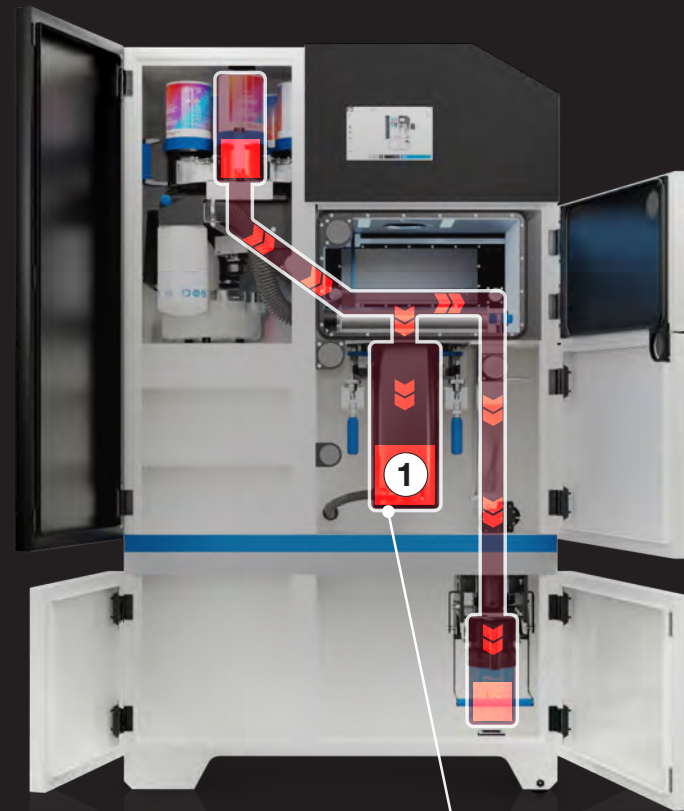
① Printing process

The powder is added from the supply cartridge. The overflowing powder is collected in the overflow cartridge. Subsequently, the building module is transported to the CORiTEC AM^{pure} by means of a lifting device for unpacking.

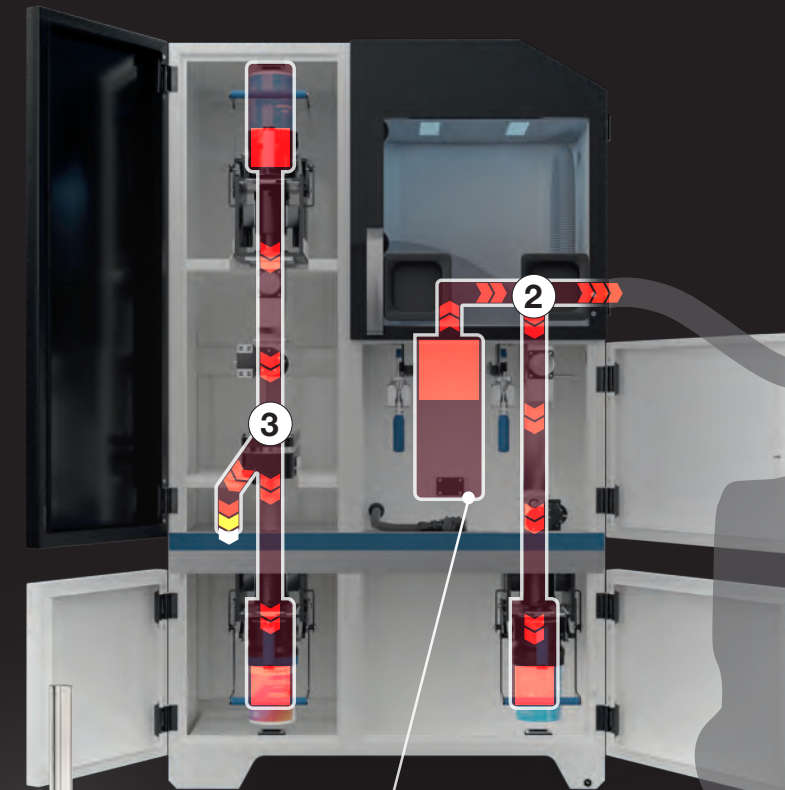
② Unpacking process

The excess powder is collected in the CORiTEC AM^{pure}. The disposal of the remaining overflow powder takes away by means of suction, so that the empty construction module is ready for the next print job in the CORiTEC AM¹⁰⁰.

CORiTEC AM¹⁰⁰



CORiTEC AM^{pure}



③ Sieving process

For sieving preparation, a cartridge change takes place between both machines. The powder is now sieved and collected by the CORiTEC AM^{pure}. Subsequently, the recycled powder is ready to be reused in the CORiTEC AM¹⁰⁰. Another cartridge change and sieving process is now completed. Finally, the proper disposal of the excess powder will be carried out.

Scan it
to see
the video!



Machine software

JUST A FEW STEPS TOWARDS A SUCCESSFUL START

The control software enables absolutely intuitive operation of the CORiTEC AM100 3D metal printer. The handling is self-explanatory and allows a quick start in dealing with the machine. Take advantage of the saved time for your workflow and start with just a few clicks.

FEATURES

- Six steps to start processing the CORiTEC AM100
- Simplest operation due to intuitive graphical user interface
- Consistent structure of the software interface in every processing step
- Web-based access enables process monitoring from everywhere



OVERVIEW

- 1 BUILD JOB
Select construction job
- 2 BUILD MODULE
Prepare construction module
- 3 POWDER SUPPLY
Check powder supply
- 4 OVERFLOW POWDER
Check overflow powder
- 5 MAINTENANCE
Check machine
- 6 FIRST LAYER
Apply first layer

START BUTTON

Start construction job



CAM/Slicing Software

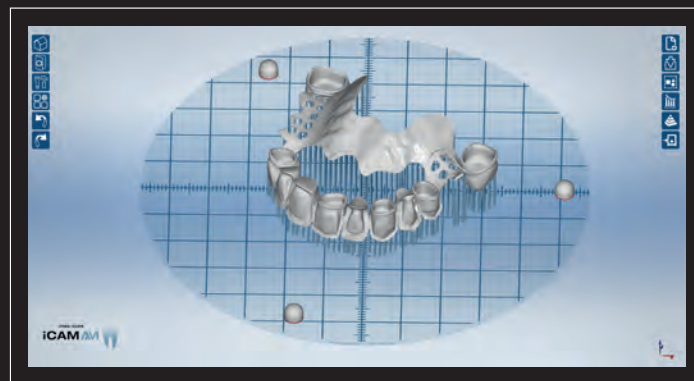
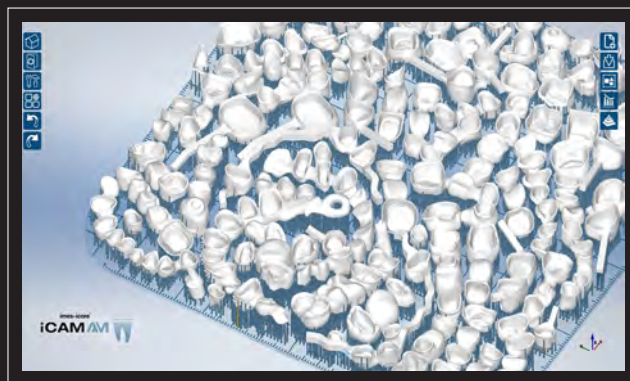
iCAM AM

THE SMART HIGH-END SOLUTION

The iCAM AM laser software – based on state-of-the-art software architecture in Windows environment – is the software solution for fast print job preparation perfectly matched to the CORTEC AM100. All features and automatisms required for the manufacturing process of the components are included in iCAM AM.

FEATURES

- Modern intuitive user interface
- Part analysis and repair through integrated MeshFixer
- Fast platform preparation through drag & drop and automatic or manual part nesting
- Flexible part editing through automatic or manual alignment, scaling and copying
- Automatic detection of critical areas incl. repair through support structures support
- Perfect hatching parameters for the validated powder i-ProMelt
- Print data preparation for the hybrid process using the **iCAM Hybrid** add-on



30 DAYS TESTING

Test installation of the full version possible

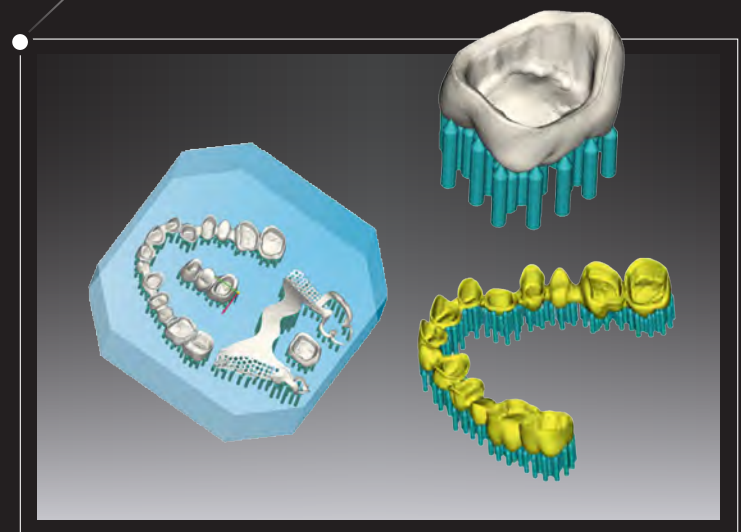
Maximum compatibility and variability

INTEGRATION OF NEW INTERFACES CREATES MORE FLEXIBILITY

Through continuous extensions and integration of new interfaces, further CAD/CAM solutions are integrated for the hybrid workflow.

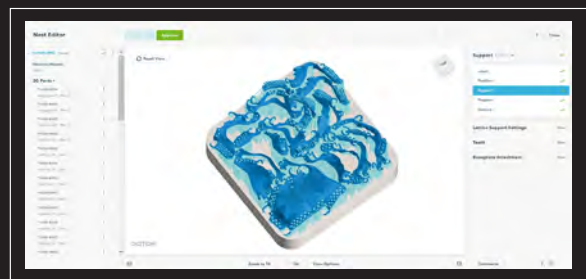
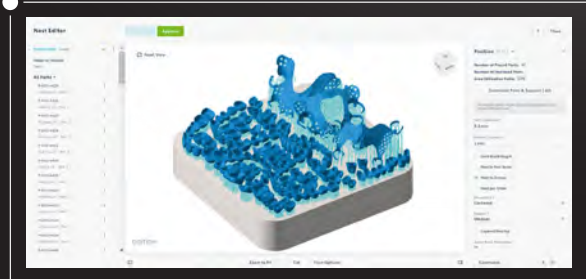
This gives users the option of using existing software tools, but also the flexibility to switch to solutions from other providers.

hyperDENT®



More info about
OQTON Dental

OQTON



Consumables & Accessories



Building module 150 x 150 x 150 mm

- Integrated connection for the build platform and atmosphere balancing process
- The substrate plate is fixed in the build module of the AM100 with the bayonet lock



Heating module 150 x 150 x 150 mm

- For better results with certain materials by printing with optimized temperatures (min. 80°C / max. 200°C) with a preheating time of < 60 minutes



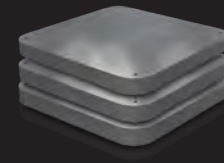
Lab module

Mounting surface: 78 x 53 mm (L x W)

- Use of other powder materials without time-consuming material change
- Integrated powder supply
- Removable overflow container
- Height: 90 mm (1.5-fold dosage)

Substrate Plate | 3-pack

- Dimensions: 152 x 30 x 152 mm (W x H x D).
- Provides the perfect base for welding the component
- Avoidance of distortion as well as optimal heat dissipation



Replacement cartridges for supply & overflow

- Ergonomic handling with max. 11 kg filling quantity
- Integrated NFC tag (no batch mixing possible*, quality assurance of the powder, automatic closing cycle detection, fill level query)



Main filter | 6-pack

- Dimensions: 135 x 235 x 135 mm
- Optimal filtering of the welding fumes for reuse of the gas



Electric lift incl. construction module fork

- Uncomplicated transport of the building module with a lifting speed of 100 mm/s (with load) with a load capacity of 80 kg



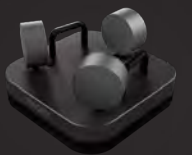
PSA package for one person

- Personal protective equipment: 1 x powder gown | 1 x safety goggles | 5 x disposable respirator mask | 1 x pack of rubber gloves (L)



Levelling aid building panel

- The leveling aid is used to align the building panel



Optics case

- 1x Shockproof carrying case
- 10x scanfield calibration measuring plates
- 1x Scanfield calibration device
- 10x focus alignment measuring plates



Remote control and monitoring software

- Free software**
- Status monitoring of machine and job parameters



i-ProMelt / i-ProFuse powder package

- Powder content per storage container: 5 kg (i-ProMelt) / 2.5 kg (i-ProFuse)
- Low annual machine utilization: 5-pack (recommended)
- High annual machine utilization: 10-pack (recommended)



i-PRODENS

Further accessory equipment

To complement the starter kit for the CORiTEC AM100 printer, we offer a wide range of tested accessories: Suction system, Electropolishing system, Annealing furnace, Suction system, Electropolishing system, Annealing furnace, Nitrogen generator, Metal band saw

The hybrid process

...FOR WORKFLOW-BASED 3D METAL PRINTING

In combination with the 350i and 650i series of CORTEC milling systems, new standards in hybrid technology for high-quality dental restorations are set by the re-milling of LPBF units. Coordinated hardware and software interfaces as well as automated measuring functions via the CAM and slicing software guarantee the precise and easy handling. The special process was developed, for instance, to build up highly complex bar constructions in advance in a cost-effective additive process and then to rework the interfaces with the CORTEC milling machines to the perfect, absolute fit and surface quality. An optimally coordinated system, with a well designed and integrated workflow.

The final processing

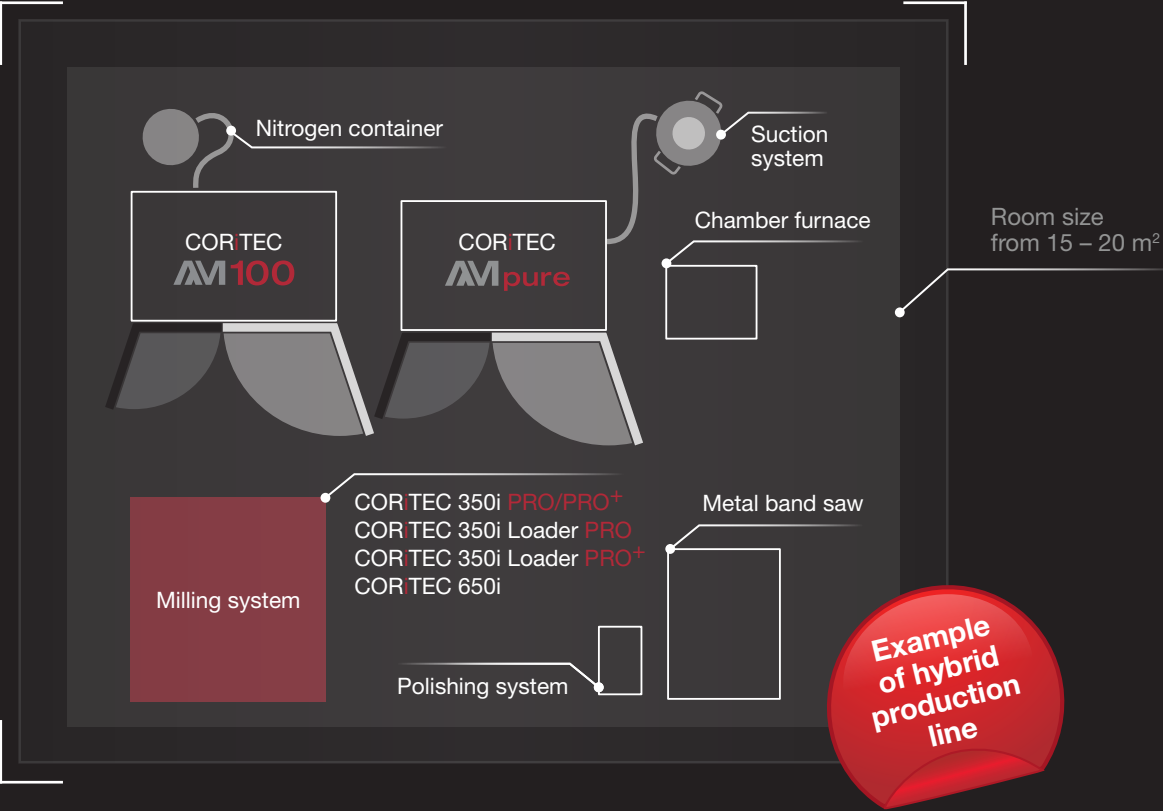
...USING MILLING SYSTEMS OF THE CORTEC 350i/650i SERIES

Constructions designed in LPBF technology are re-milled to the highest precision by CORTEC milling machines of the 350i and 650i series. Complex bar constructions can be manufactured in a cost-optimized manner using the additive process, and interfaces can be machined to perfect fit and surface quality by means of the downstream milling process. The subtractive remachining process is implemented in a special workflow and via integrated 3D measurement technology within the CORTEC 650i. In the CAM software module, the positions of individual works, fastening points, and the fit and interface areas are defined and transferred to the slicing module. Completed constructions are picked up within the machine by means of modified holders. The exact positioning of the LPBF construction plate by a 3D measuring probe is followed by high-precision milling.



Your production line in the smallest spaces

Our systems can be set up in the blink of an eye in rooms as small as 15 to 20 m² and enable smooth and powerful production that can be used effectively. With the milling systems of the COR TEC 350i and 650i series, a complete production line can be created, that is capable of meeting individual requirements and needs. This production targets are achieved more quickly and at the same time enable a diverse portfolio of end products for a wide range of applications.



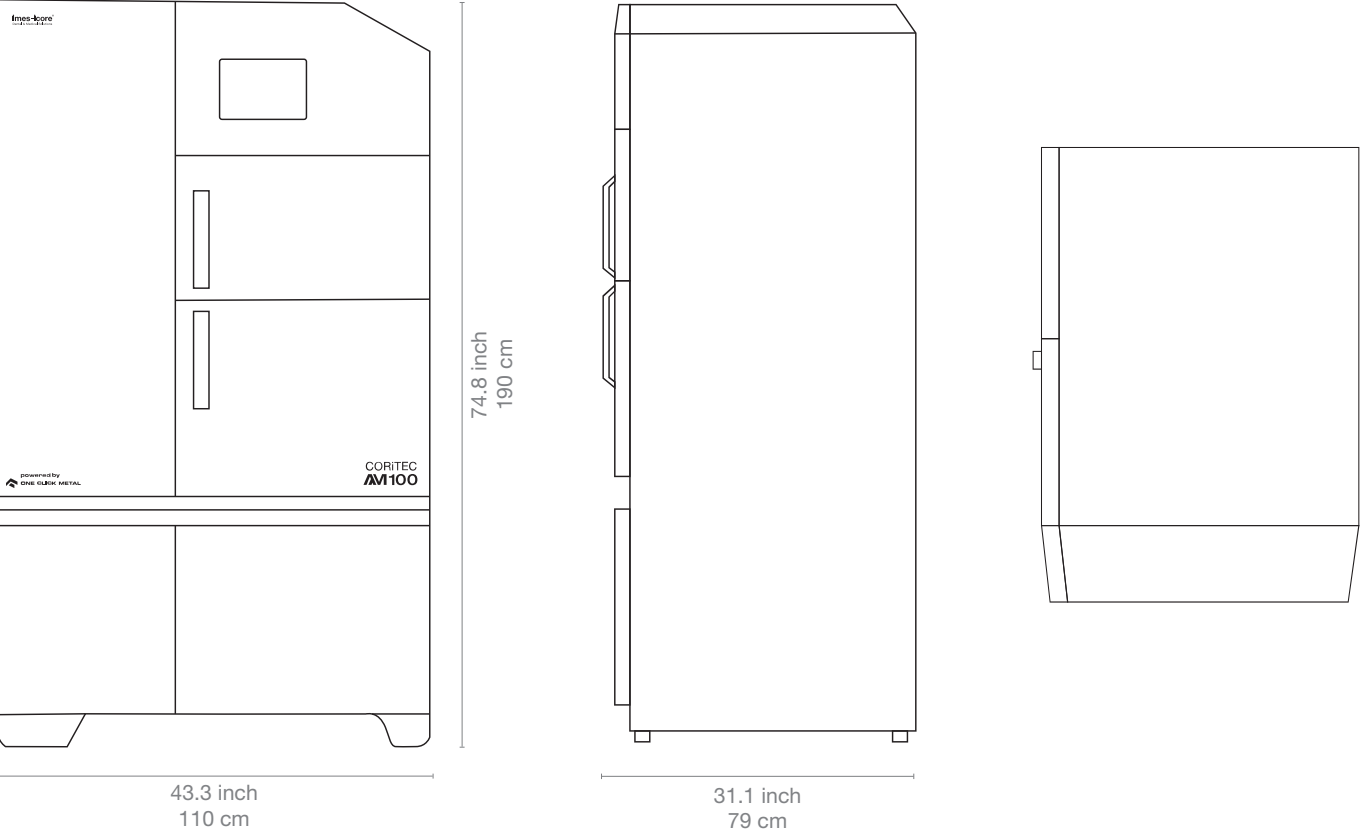
Zircon milling must not be performed in a room with the LPBF process of CoCr.



THE LATEST TECHNOLOGY
**suitable for your
production center**

Dimensions

CORiTEC AM100



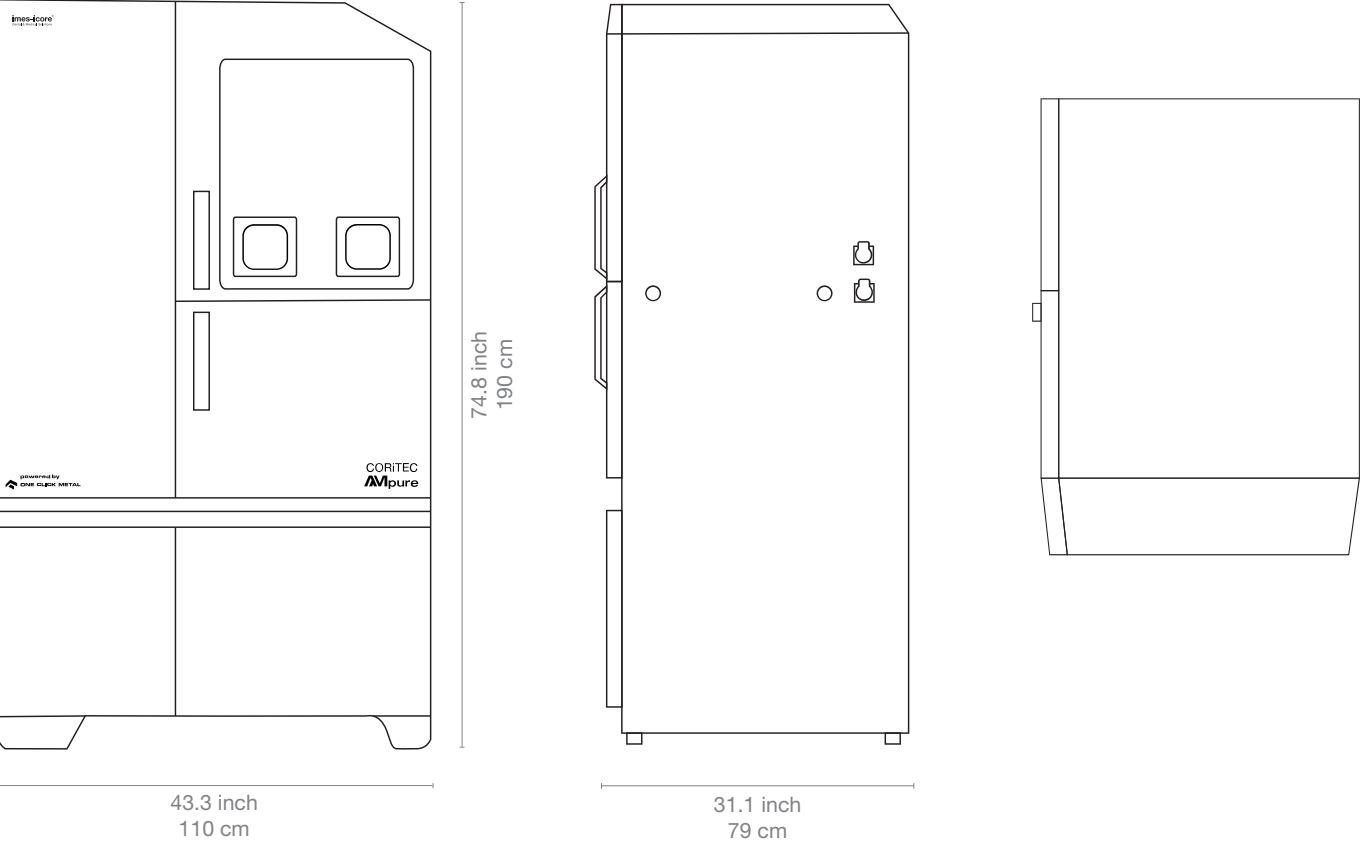
In numbers

CORiTEC AM100

| Process chamber | |
|----------------------------|---|
| Printing method | LPBF (Laser Powder Bed Fusion) |
| Powder application | X profile |
| Laser power | 200 Watt (Fiber) |
| Focus diameter | 70 µm |
| Scanning speed | Up to 3000 mm/s |
| Building module | |
| Machining volume | 5.9 x 5.9 x 5.9 inch / 150 x 150 x 150 mm |
| Layer height | 20 – 80 µm |
| Powder supply | |
| Magazine | Up to 5 supply cartridges |
| Powder quantity | At max. utilization 250 % overdosing of the construction volume |
| Data preparation | |
| CAM/Slicing software | iCAM AM |
| Connection and consumption | |
| Power supply | 110 - 230 V / 50-60 Hz |
| Fuse | 16 A |
| Inert gas | Nitrogen |
| Filter | Replaceable gas filter |
| Dimensions and weight | |
| Width x depth x height | 4.3 x 31.1 x 74.8 inch / 1100 x 790 x 1900 mm |
| Weight | 440 kg |
| Material | |
| Powder | CoCr / Ti |

Dimensions

CORiTEC **AM**pure



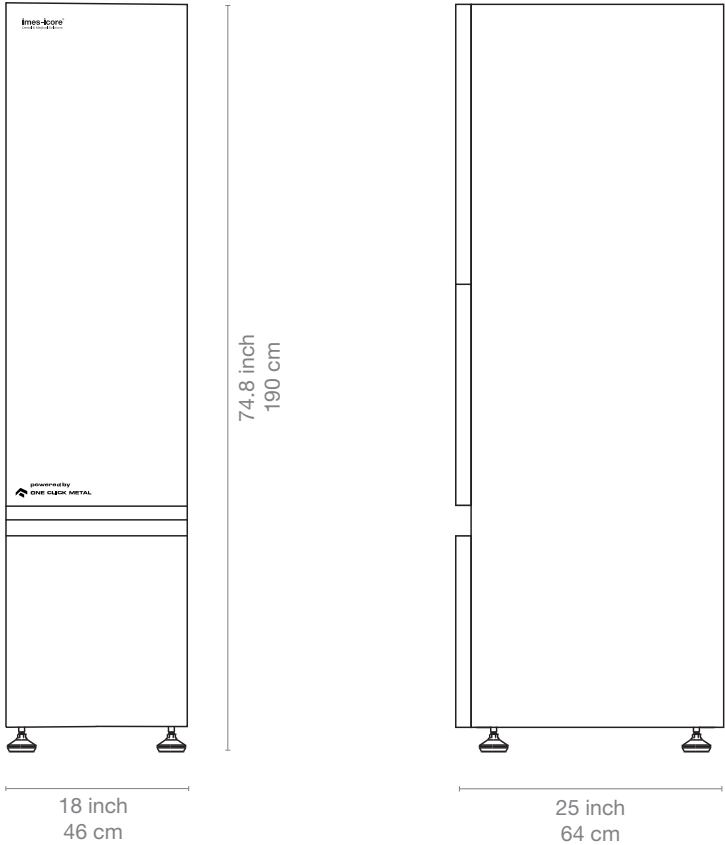
In numbers

CORiTEC **AM**pure

| Workflow | |
|-----------------------------------|--|
| Working processes | De-powdering + Sieving = Recycling (2in1 unpacking and sieving station) |
| Unpacking chamber | |
| Chamber structure | Glove intervention for unpacking without direct powder contact |
| Suction system | Integrated connection for external suction system |
| Material | |
| Powder | CoCr / Ti |
| Sieving unit for powder recycling | |
| Sieving process | Ultrasonic sieve |
| Powder preparation | Reuse through sieved powder in supply cartridge |
| Residual disposal | Separate for disposal of the oversize powder |
| Connection and consumption | |
| Power supply | 230 V / 50 – 60 Hz |
| Fuse | 16 A |
| Dimensions and weight | |
| Width x depth x height | 4.3 x 31.1 x 74.8 inch / 1100 x 790 x 1900 mm |
| Weight | 350 kg |

Dimensions

CORiTEC **AM**pure *lite*



In numbers

CORiTEC **AM**pure *lite*

| Workflow | |
|-----------------------------------|--|
| Working processes | Sieving + Recycling (Sieving unit for powder recycling) |
| Material | |
| Powder | CoCr / Ti |
| Sieving unit for powder recycling | |
| Sieving process | Ultrasonic sieve |
| Powder preparation | Reuse through sieved powder in supply cartridge |
| Residual disposal | Separate for disposal of the oversize powder |
| Dimensions and weight | |
| Width x depth x height | 18 x 25 x 74.8 inch / 460 x 640 x 1900 mm |
| Weight | 130 kg |

Sales and support partner worldwide



Represented for you in over 100 countries.

imes-icore® GmbH has been a leading manufacturer and technology partner since 2003 in the field of dental CAD/CAM systems and solutions.

With its unique range of dental milling and grinding systems imes-icore® offers a perfect selection for all individual requirements of dental laboratories, milling centres and dental practices of all sizes.

Our “Open-System” product philosophy makes it possible to easily integrate our milling machines into your existing workflow and to integrate them with your open scanners and your CAD/CAM software. We are open for your material selection.

imes-icore® GmbH

Fon +49 (0) 66 72/898 228

Fax +49 (0) 66 72/898 222

dental@imes-icore.com