

adam

the first entry level **high quality** cabinet



ROSSIC&WS



The first, the only one

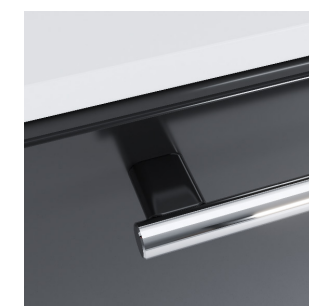
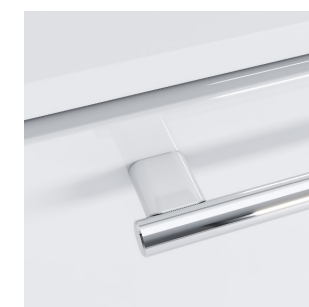
Contemporary design cabinet, higher category equipment, unbeatable value for money: a dream that comes true! Open your eyes and discover **Adam**, the first line that redefines quality standards of entry level furniture. *Sometimes reality goes beyond imagination.*



Come closer, open a drawer and look at sliding guides wrapped by shape sides that protect them from dirt and dust. Alternatively, just look at handles coordinated with the fronts.

An innovative and minimal result in which aesthetics and function are integrated in a perfect symbiosis.

Minimalist innovation



Handles matched to the color of fronts and painting that enhances brilliant colors make Adam a cabinet with sparkling personality.

- — **Soft closing**
Silent closing drawers now it's standard. Would you go back?
- • **Brilliant colours, always**
White powder coating WA005 is applied in all components.
Any other colour receives a further liquid paint coat to keep the surface brighter over time.
- — **Certified tests**
Guides durability (80.000 opening rounds)
Abrasion and scratching resistance
- — **Guaranteed reliability**
Guarantee more than doubled compared to standards: up to 5 years. This means quality.

Number One reliability

A balanced combination of elements,
designed to last over time.
Ground or suspended volumes multiply
composition possibilities, with standard
equipment that... simply didn't exist before!



adam
4 moduli
ripiano in LAP, vasca in acciaio inox
4 modules
LAP worktop, stainless steel sink

A2

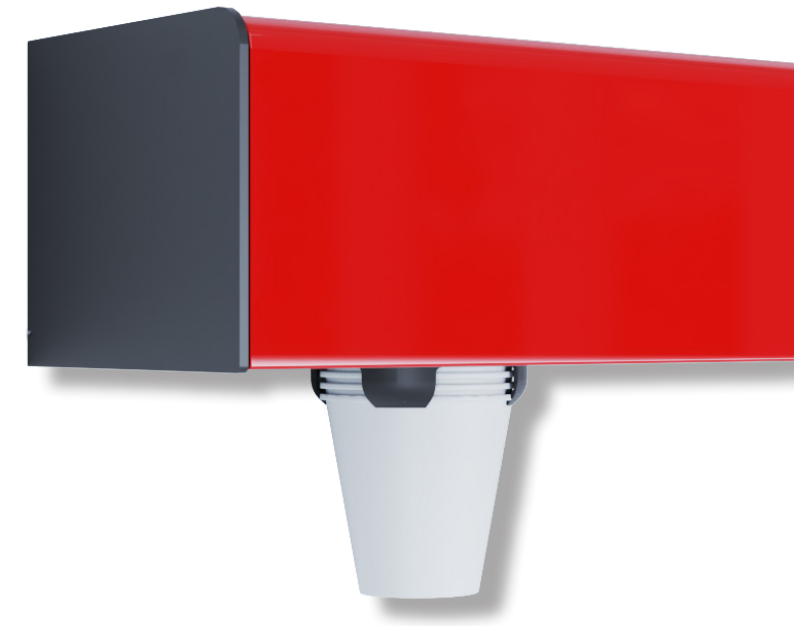
Pure essence

Adam represents the evolution compared to other entry level proposals you have seen so far. A harmonious system designed to enhance beauty and efficiency in all its forms. Matching mobile cabinets and the compact dispenser Eden complete this range.



adam
A3

A3 | Laminate worktop · porcelain sink · grey RAL 7021 mobile cabinet



Eden upper side can be a useful support base

The first extra slim dispenser. The best solution to distribute disposable products in safety and identify each room by colour. Isn't this the Eden?

Eden. Order and color

frame: grey mat
size: W56 H10 D15cm



EDEN (standard)



EDEN_R



EDEN_BK



EDEN_G



EDEN_Y



EDEN_B

Frame and drawers

Worktops

From traditional laminate to refined Corian up to white or colored glass, for an amazing effect.

Made of **electrogalvanized steel**, a non-porous material that repels dirt and any external substance from the surface. This kind of steel is also easy to clean and sanitize: **the best option for your practice safety.**



Laminate

Resistant to abrasions and scratches and generally chosen with porcelain sink, it is the lowest price choice. Thanks to its only 19mm thickness, it is in keeping with latest trends, giving a timeless aspect to the cabinet



LAP

Laminate worktop evolution. It is made of cellulose fibre layers combined with thermoset resins. It is subjected to high pressure process, giving more resistance and allowing 12mm low thickness with high aesthetic impact



Corian®

The most advanced material in the market composed of natural minerals and pure acrylic polymers. It has a very high wear resistance, blocks absorption and filtration of liquids, ensuring maximum hygiene and cleaning. Its particular smoothness sensation to touch and the only 12 mm thickness, makes Corian a practical, elegant and lasting choice



Glass

560°C vitrified ceramic colours that defines 20mm slab hue keeping transparency untouched. Water-repellent glass worktop easy to sanitize. Further version with anti-fingerprint satin finish treatment available

Zero kilometer manufacturing process

Over 90% of raw material suppliers are local. A specific choice, with the advantage of checking the quality of all materials any time and certifying suitability for use in the production process.

Furniture made to last

Designed for a long life cycle, Adam will follow your work and that of your coworkers over the years. Thanks to the involvement of local suppliers, the materials are constantly monitored and guarantee a quality that last over time.



A4 | Corian worktop and sink · blue Pantone 2225c



Features and accessories

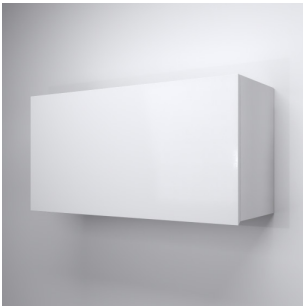


frame	electrogalvanized steel	white WA005 (standard) or customized color
structure	<div><div>· plinth</div><div>· supporting structure</div><div>· hanging</div></div>	white WA005 (standard) or customized color
drawers	<div><div>· soft closing system</div><div>· size from T1 to T4</div><div>· small drawers (T1) with insert included</div><div>· drawers T2/T3/T4 with optional insert</div></div>	front color: white WA005 (standard) or customized
handles	steel	handles coordinated with the fronts

wall cabinets



Opaque glass sliding doors and 2 glass shelves (AT80 · W100 · H45.5 · D36cm)



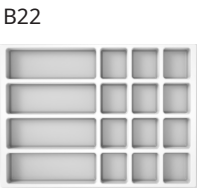
One door and 2 glass shelves (AT82 · W100 · H45.5 · D36cm)



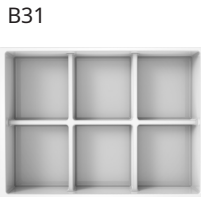
One door and 2 glass shelves (ATP3 · W50 · H45.5 · D36cm)

drawer inserts

Small drawers T1 (included)



Drawers T2/T3/T4 (optional)



structure



Plinth



Supporting structure

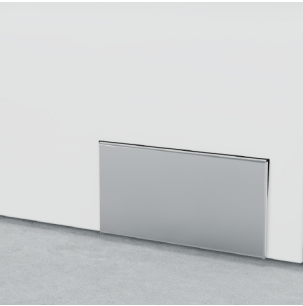


Suspended

Plinth and steel supporting structure modules
Ground clearance 81cm (worktop not included)

Suspended module
Ground clearance 64cm (worktop not included)

electromagnetic control



Pedal control, for plinth structure (ACS2)



Spring-loaded, for supporting and suspended structure (ACS2A)

mobile units



C502 | C503 | C503A



C502
Mobile unit (W38 H85 D43cm) with 3 shelves (W38 D32/29cm), space between shelves 31cm. Payload 15kg (C502/C502A)

C503 | C503A
Mobile unit (W45 H85 D49cm) with 3 shelves (W45 D38/34/40cm), space between shelves 37cm. Payload 15kg (C503/C503A)



FRIDAY
Six different versions for handling electrical appliances, bagged sterile instruments, infected material, sharps and a waste separator





rossiC&WS

Rossicaws Srl
Via dell'Artigianato 3
I - Montecchio Precalcino (VI)
rossicaws.it · facebook @rossicaws